

Assessment Evidence Guide
for
“Junior Draftsman in
CAD/CAM”
Level-2
(Summative Assessment)



National Vocational & Technical
Training Commission

Instruction Sheet for the Candidate

Title of Qualification: National Vocational Certificate level-2 Computer Aided Design & Manufacturing (Junior Draftsman)	CS Code:	Level: 2	Version:01
Competency Standard Title: Perform Basic Manual Drawing Construct different engineering curves Perform free hand sketching (isometric) Construct Multi-view drawings (sectioning) Develop 2D Drawings in AutoCAD Perform Basic computer Operations Follow Safety Rules at Site Perform Basic Communication Skills	Assessment Date (DD/MM/YY): Assessment Time: 4 hrs.		

Candidate Details	Name: Registration/Roll Number:
Guidance for Candidate	<p>To meet this standard, you are required to complete the following within the given time frame (for practical demonstration & assessment):</p> <p>Assessment Task 1: Candidate is required to draw following drawings in Auto CAD with dimensioning, printing and submit final drawing sheet as per instruction given by assessor:</p> <ul style="list-style-type: none"> ✓ layout for drawing ✓ plan ✓ elevation ✓ section ✓ schedule of opening <p>And complete:</p> <ol style="list-style-type: none"> 1. Knowledge assessment test (Written or Oral) 2. Portfolios at the time of assessment (if any)
Minimum Evidence Required	<p>During a practical assessment, under observation by an assessor, you will complete:</p> <p>Assessment Task 1</p> <p>Performance criteria 1. Setup & save drawing interface for required specifications.</p> <p>Performance criteria 2. Setup user interface settings for required specifications.</p> <p>Performance criteria 3. Create 2D objects with given measurements.</p> <p>Performance criteria 4. Edit 2D Objects to meet set standards.</p> <p>Performance criteria 5. Develop 2D Drawing with given project</p>

	<p>specification and measurements.</p> <p>Performance criteria 6. Plot drawing on scale according to required size & orientation.</p> <p>Performance criteria 7. Identify risk associated with job to be done</p> <p>Performance criteria 8. Carry out the instructions of the supervisor</p>
	<p>Portfolios required at the time of assessment (if any) for</p> <ul style="list-style-type: none"> ✓ File/folder includes evidence about Basic Manual Drawings ✓ File/folder includes evidence about Different Engineering Curves ✓ File/folder includes evidence about free hand sketching (Isometric) ✓ File/folder includes evidence about multi-view drawings (Sectioning) ✓ File/folder includes evidence about Basic Computer Operations <p>Performance criteria 1: Draw Boundary lines as per standards.</p> <p>Performance criteria 2: Make title bar</p> <p>Performance criteria 3: Draw upper and lower lines for lettering according to standards.</p> <p>Performance criteria 4: Start Writing Vertical Lettering with different style like Gothic, Roman and free hand lettering.</p> <p>Performance criteria 5: Start Writing inclined Lettering with different style like Gothic, Roman and free hand lettering.</p> <p>Performance criteria 6: Draw the engineering drawing lines including part outlines, section lines, hidden lines, centre lines, dimension lines, extension lines, cutting plane, break lines.</p> <p>Performance criteria 7: Draw different diameters circles and half circles.</p> <p>Performance criteria 8: Draw square, triangle and hexagon according to dimension.</p> <p>Performance criteria 9: Draw pentagon, Hexagon and Octagon.</p> <p>Performance criteria 10: Draw the Top view of object from its isometric view</p> <p>Performance criteria 11: Draw the Front view of object from its isometric view</p> <p>Performance criteria 12: Draw the Side view of object from its isometric view</p> <p>Performance criteria 13: Draw plan view in 1st angle of Projection by orthographic projection.</p> <p>Performance criteria 14: Draw side view in 3rd angle of projection by orthographic projection.</p> <p>Performance criteria 15: Print Word Documents according to</p>

	<p>requirements.</p> <p>Performance criteria 16: Develop a worksheet as per given data.</p> <p>Performance criteria 17: Insert Slides with different Layouts according to requirements of presentation.</p>
--	---

Continued on following page

Assessors Judgment Guide

(to be completed by the Assessor and signed both by the assessor and the candidate after the assessment)

Candidate Details	Name: Registration/Roll Number: Candidate Signature:.....
Assessment Outcome	COMPETENT <input type="checkbox"/> NOT YET COMPETENT <input type="checkbox"/> Name of the Assessor: Assessor's code: Signature of the Assessor:.....

Assessment Summary (to be filled by the assessor)							
Activity	Method					Result	
Nature of Activity	Written	Oral	Observation	Portfolio	Role Play	Competent	Not Yet Competent
Practical Skill Demonstration			✓				
Knowledge Assessment	✓	✓					
Other Requirement				✓			

Observation Checklist				
Assessment Task 1		Description of Assessment Task 1 Draw following drawings in Auto CAD with dimensioning, printing and submit final drawing sheet as per instruction given by assessor: <ul style="list-style-type: none"> ✓ layout for drawing ✓ plan ✓ elevation ✓ section ✓ schedule of opening 		
During the practical assessment, candidate demonstrated the following:		Yes	No	Remarks
1.	Setup & save drawing interface for required specifications.			
2.	Setup user interface settings for required specifications.			
3.	Create 2D objects with given measurements.			
4.	Edit 2D Objects to meet set standards.			
5.	Develop 2D Drawing with given project specification and measurements.			
6.	Plot drawing on scale according to required size & orientation.			
7.	Identify risk associated with job to be done			
8.	Carry out the instructions of the supervisor			
Competent <input type="checkbox"/>		Not Yet Competent <input type="checkbox"/>		

Portfolio	Description of Portfolio ✓ File/folder includes evidence about Basic Manual Drawings ✓ File/folder includes evidence about Different Engineering Curves ✓ File/folder includes evidence about free hand sketching (Isometric) ✓ File/folder includes evidence about multi-view drawings (Sectioning) ✓ File/folder includes evidence about Basic Computer Operations			
During the practical assessment, candidate demonstrated the following:		Yes	No	Remarks
1.	Draw Boundary lines as per standards.			
2.	Make title bar			
3.	Draw upper and lower lines for lettering according to standards.			
4.	Start Writing Vertical Lettering with different style like Gothic, Roman and free hand lettering.			
5.	Start Writing inclined Lettering with different style like Gothic, Roman and free hand lettering.			
6.	Draw the engineering drawing lines including part outlines, section lines, hidden lines, centre lines, dimension lines, extension lines, cutting plane, break lines.			
7.	Draw different diameters circles and half circles.			
8.	Draw square, triangle and hexagon according to dimension.			
9.	Draw pentagon, Hexagon and Octagon.			
10.	Draw the Top view of object from its isometric view			
11.	Draw the Front view of object from its isometric view			
12.	Draw the Side view of object from its isometric view			
13.	Draw plan view in 1 st angle of Projection by orthographic projection.			
14.	Draw side view in 3rd angle of projection by orthographic projection.			
15.	Print Word Documents according to requirements.			
16.	Develop a worksheet as per given data.			
17.	Insert Slides with different Layouts according to requirements of presentation.			
Competent <input type="checkbox"/>		Not Yet Competent <input type="checkbox"/>		

Knowledge Assessment

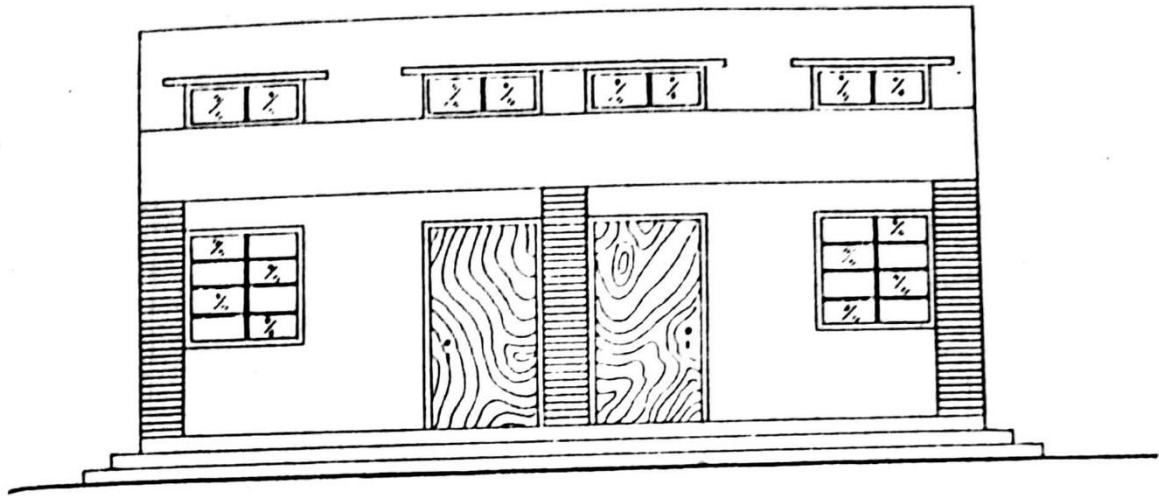
Title of Qualification: National Vocational Certificate Level 2 in Hair and Beauty Services (Junior Artist/Therapist)	CS Code:	Level: 02	Version: 01
Competency Standard Title: Perform Basic Manual Drawing Construct different engineering curves Perform free hand sketching (isometric) Construct Multi-view drawings (sectioning) Develop 2D Drawings in AutoCAD Perform Basic computer Operations Follow Safety Rules at Site Perform Basic Communication Skills	Assessment Date (DD/MM/YY): Assessment Time: 30 min		

Guidance for Candidate	To complete your assessment for this Competency Standard, you need to answer the questions on the following pages successfully.
------------------------	--

Candidate Details	Name: Registration/Roll Number: Candidate Signature:.....
Written Assessment Outcome	COMPETENT <input type="checkbox"/> NOT YET COMPETENT <input type="checkbox"/> Name of the Assessor: Assessor's code: Signature of the Assessor:.....

Question	Candidate's answer
Answer these questions.	
1. Name different types of sections?	
2. What is the standard Size of drawing sheet?	
3. Enlist different tools used in manual drawing	
4. What is schedule of opening?	

Question	Candidate's answer
Answer these questions.	
5. Explain any two differences in 1 st angle and 3 rd angle Projection.	
6. What is short key for fillet in Auto CAD	



ELEVATION

Elevation of the Building

